



One page guide to September 2020

(double-sided!)

	Drop off	Collect
Nursery	8:50am 12:35pm	11:30am 3:15pm
Classes 1, 2, 4, 6	8:55am	3:00pm
Classes 3, 5	9:00am	3:05pm
Classes 7, 9, 11, 13	8:45am	3:10pm
Classes 8, 10, 12, 14	8:50am	3:15pm

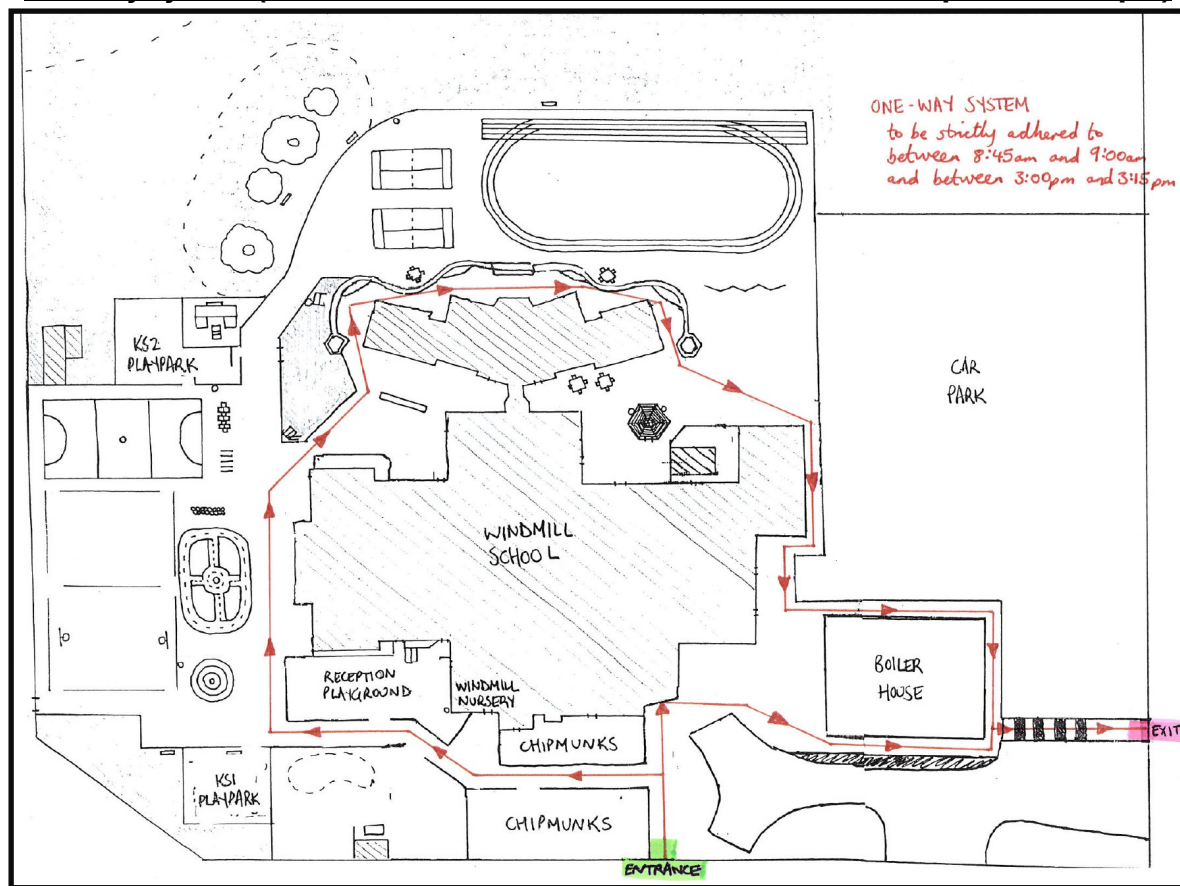
Please help us:

- ◆ No one to enter the site with COVID-19 symptoms - coughing, high temperature, loss of smell/taste
- ◆ Self-isolate if someone in your house has symptoms
- ◆ Arrive on time (not early or late)
- ◆ Keep your distance from others when waiting to go into classrooms (keep your children near you)
- ◆ Don't come to the school office - phone or email



Breakfast club is open between 7:45am and class start times, but booking is essential - contact school office

One-way system (between 8:45am and 9:00am and between 3:00pm and 3:15pm)



Public Health England's 'System of Controls' **(in a nutshell)**

- 1) **People who are ill should stay at home**
 - isolation before and after test
 - follow direction
- 2) **There must be robust hand hygiene**
 - wash/sanitise hands on arrival, after break, before and after eating
- 3) **There must be robust respiratory hygiene**
 - catch it, bin it, kill it (tissues and bins)
- 4) **There must be enhanced cleaning**
 - we will ask colleagues to wipe surfaces
 - we will employ a cleaner during the working day
- 5) **We must minimise contact and contamination and maximise distance**
 - see school plan and risk assessment
- 6) **We must have and use appropriate Personal Protective Equipment in the right circumstances**
 - see school plan and risk assessment
- 6) **We must participate in the NHS Test and Trace programme**

Transition Week - Wednesday 2nd September to Friday 4th September

No school uniform (practical clothes please)... emphasis on getting to know the new class... catching up after the summer break... setting expectations of each other...

Uniform remains optional for the month of September

Lunchtimes

Hot dinners will be available to all pupils but in a very specific and hygienic way.

A free hot meal is available to all children in Reception, Year 1 and Year 2 and will be delivered to the classrooms. The only choice for the meals is between the standard meal and the vegetarian option (plus any provision for allergies). If children do not like the meal available the alternative is for families to provide a packed lunch from home in advance. Please check the menu so you can plan for this.

Children in Years 3, 4, 5 and 6 will go to the hall for their meals and it will be a set menu (no choice apart from a vegetarian option and provision for allergies). Hot meals are £2.35 for children in these year groups unless they are entitled to Free School Meals.

Families can choose to send their child to school with a packed lunch if they prefer.

We are still keeping 2 metres distance between everyone - across the whole site, indoors and out... staff, parents, visitors (apart from children within the same group)*

*This is because the scientific evidence shared by the government shows that children are lower risk than adults.